

• **MATERIAIS**

Manípulo, botão e coberturas: aço inox

Base: zamak

Perno: aço macio

• **MATERIALES**

Manilla, botón y tapa: acero inoxidable

Base: zamak

Eje: acero cincado

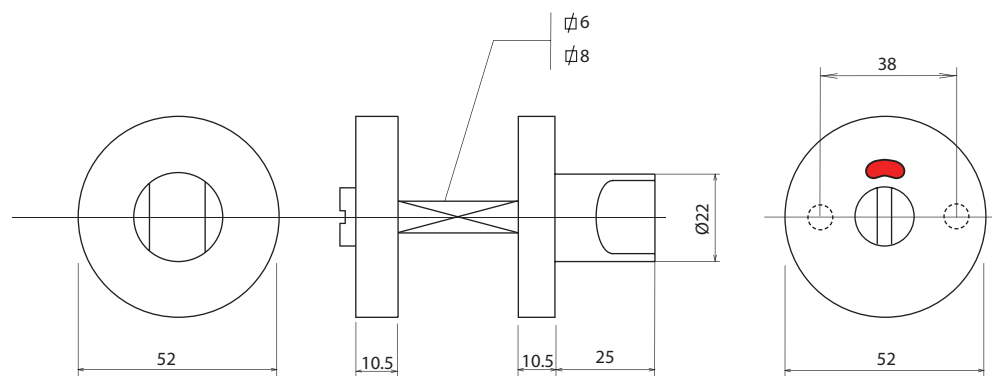
REF. 10905

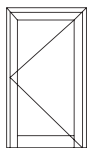
Livre e ocupado com perno em aço macio.

Condena de baño con quadrillo en acero cincado.



E
3.1





Livre-Ocupado Condenas de Baño

sofi[®]

- **MATERIAIS**

Manípulo, botão e coberturas: aço inox

Base: zamak

Perno: aço macio

- **MATERIALES**

Manilla, botón y tapa: acero inoxidable

Base: zamak

Eje: acero cincado

REF. 10905A

Livre e ocupado com perno em aço macio.

Condena de baño con quadrillo en acero cincado.



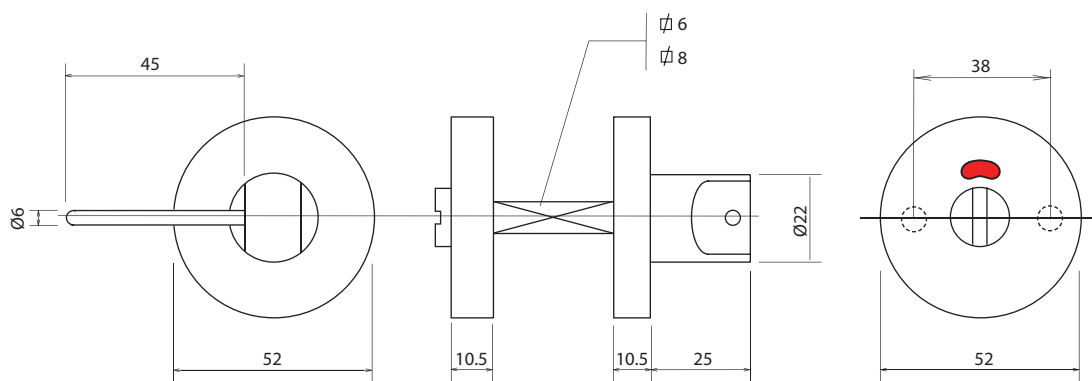
E
3.2

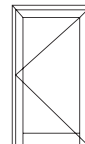
4
uh



S

P





REF. 11063

Livre e ocupado com perno em aço macio.
Condena de baño con quadrillo en acero cincado.

• **MATERIAIS**

Manípulo, botão e coberturas: aço inox

Base: zamak

Perno: aço macio

• **MATERIALES**

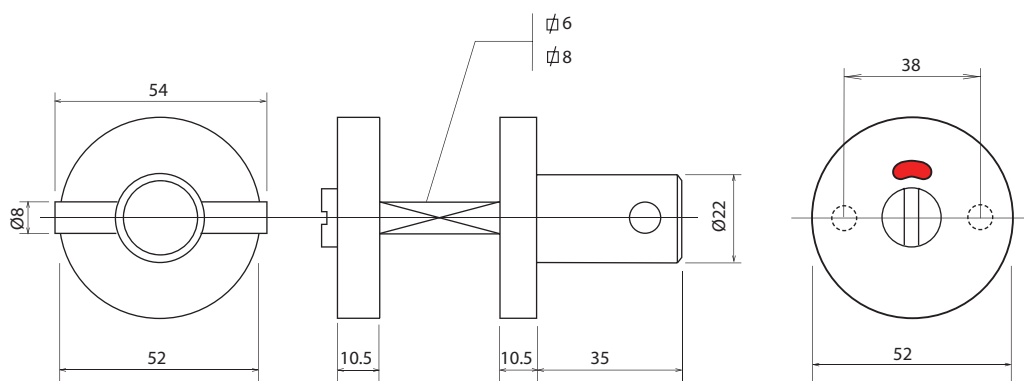
Manilla, botón y tapa: acero inoxidable

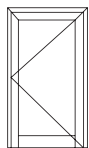
Base: zamak

Eje: acero cincado



E
3.3





Livre-Ocupado Condenas de Baño

sofi[®]

- **MATERIAIS**

Manípulo, botão e coberturas: aço inox

Base: zamak

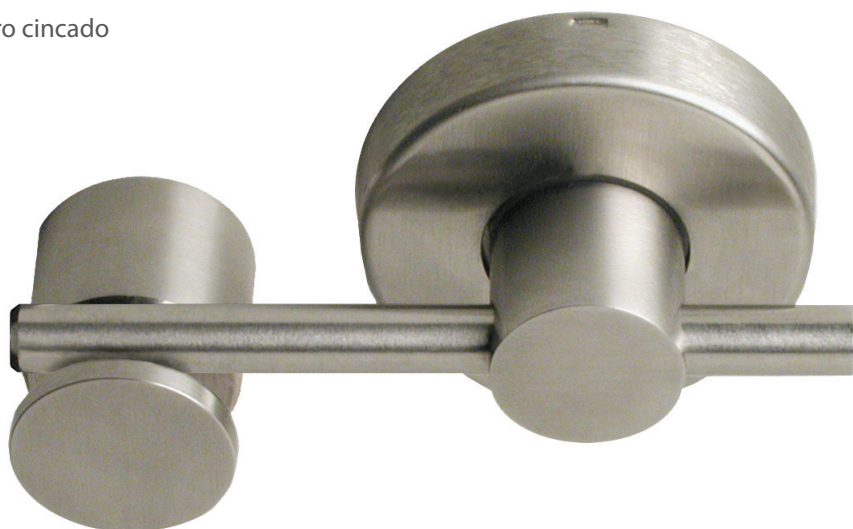
Perno: aço macio

- **MATERIALES**

Manilla, botón y tapa: acero inoxidable

Base: zamak

Eje: acero cincado

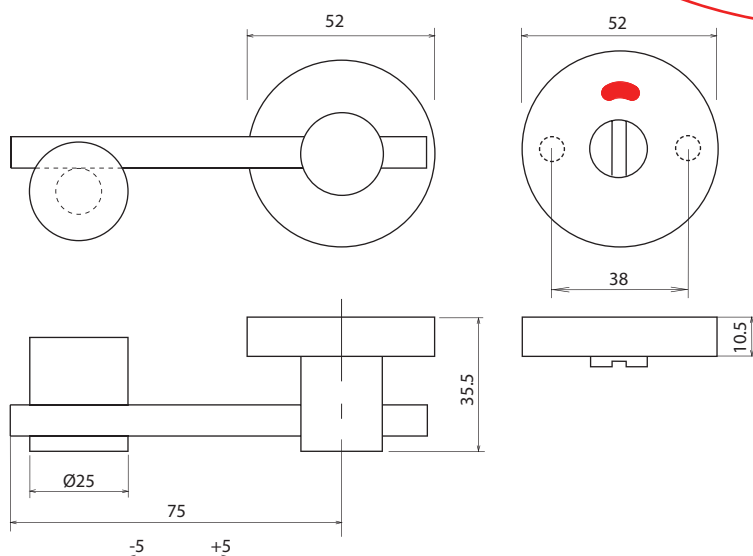


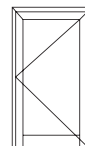
REF. 11335

Livre e ocupado com perno em aço macio.

Condena de baño con quadrillo en acero cincado.

E
3.4





- **MATERIAIS**

Manípulo, botão e coberturas: aço inox

Base: zamak

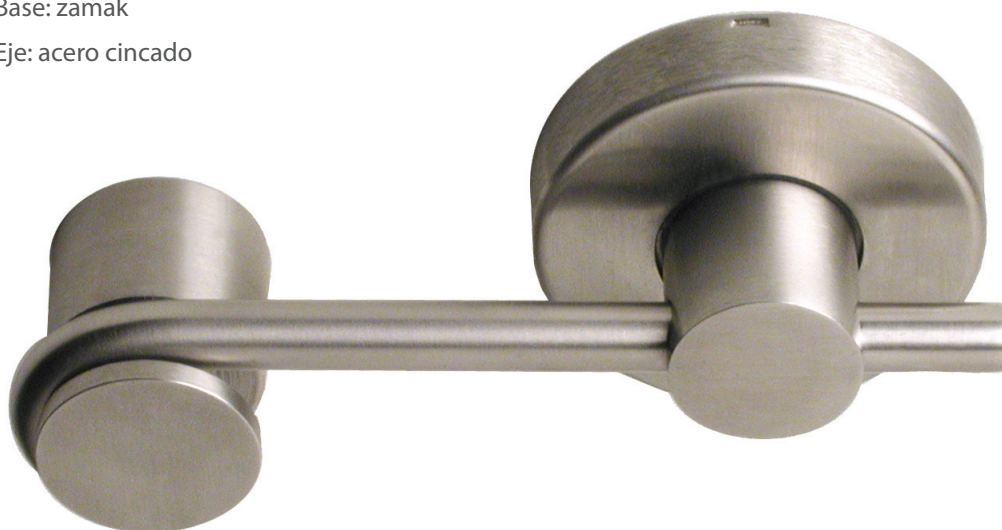
Perno: aço macio

- **MATERIALES**

Manilla, botón y tapa: acero inoxidable

Base: zamak

Eje: acero cincado



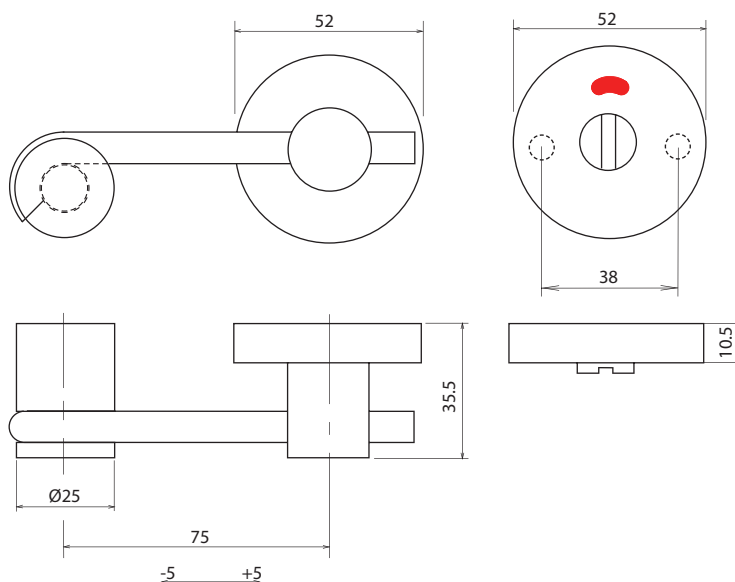
REF. 11336

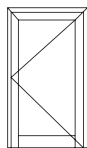
Livre e ocupado com perno em aço macio para portas de correr.

Condena de baño con quadrillo en acero cincado para puertas correderas.



E
3.5





Entradas Embelecedores

sofi

- **MATERIAIS**

Coberturas: aço inox

Base: zamak

- **MATERIALES**

Tapa: acero inoxidable

Base: zamak

REF. 10825

REF. 10830

REF. 10835

REF. 10918

REF. 10923

REF. 10996

Entradas de cilindro ou
chave, são fornecidas aos
pares.

Embelecedores de cilindro
o llave, se suministran en
pares.



10996



10830



10825



10835



10918



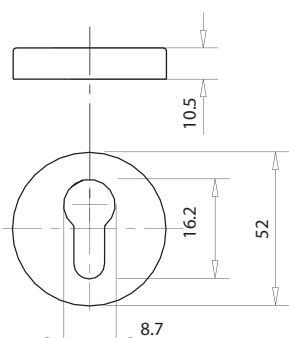
10923

5
un

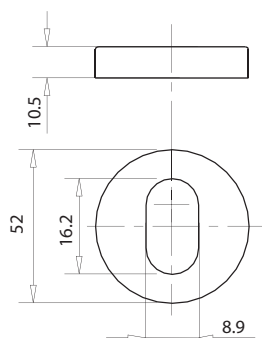


S

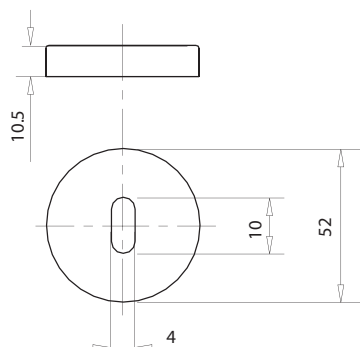
P



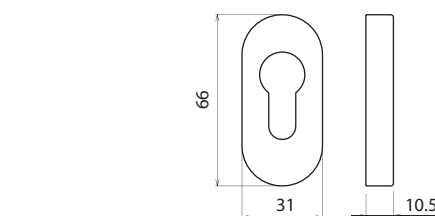
10830



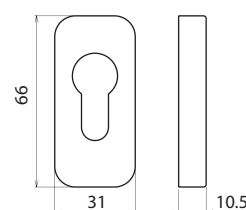
10835



10825



10923



10918

E
3.6